

Women's Balance

The power of your nature



“Women’s Balance”: a specialized program

The power of your nature



A comprehensive approach to supporting women’s health*



Five product synergies for balance, energy, mood, and inner glow*

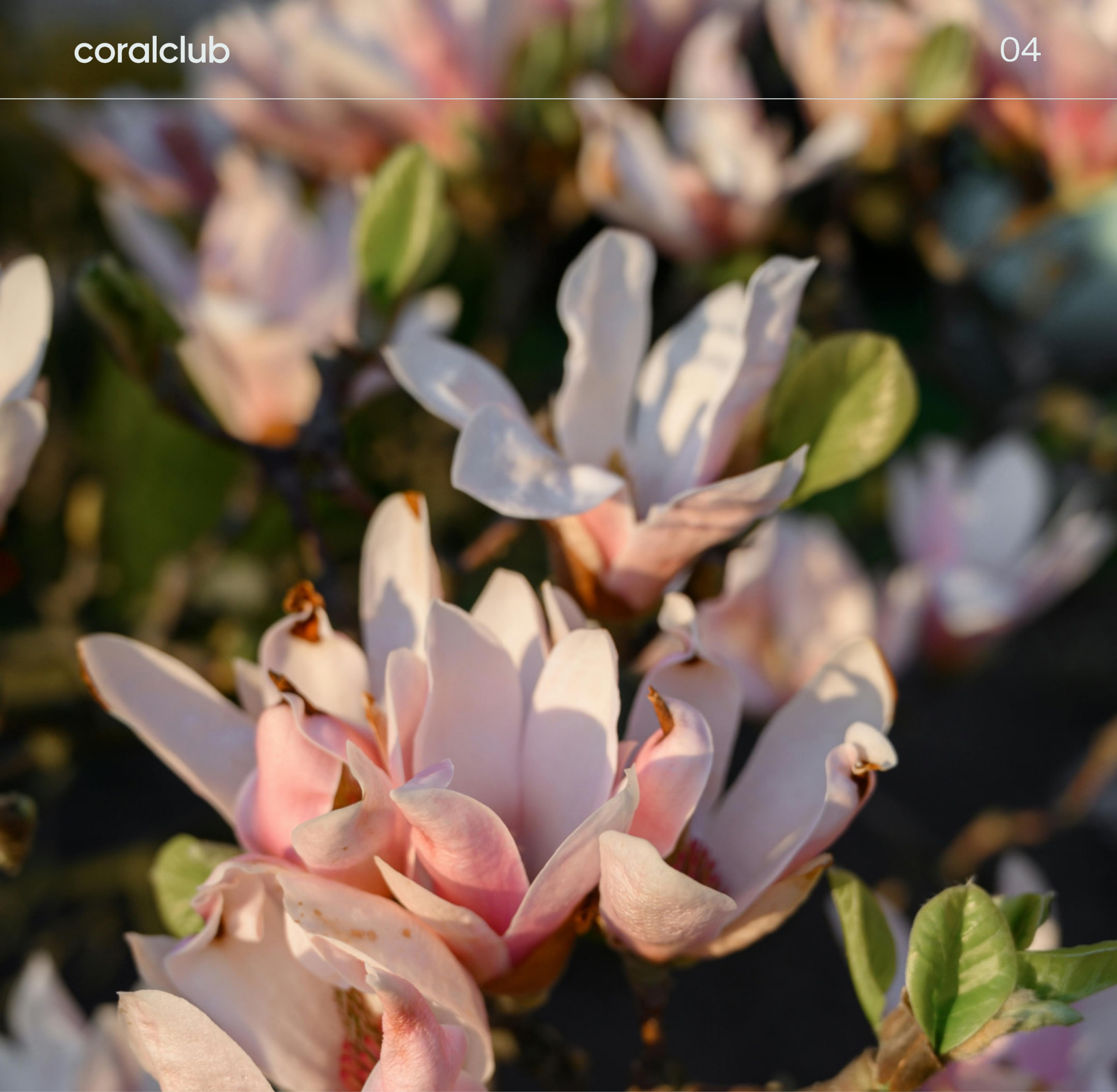
*These statements have not been evaluated by the Food and Drug Administration. This product is not intended to diagnose, treat, cure, or prevent any disease.



Women's bodies follow a natural rhythm of change

A woman's body is a dynamic system that needs attention, support, and a thoughtful approach at every stage of life.





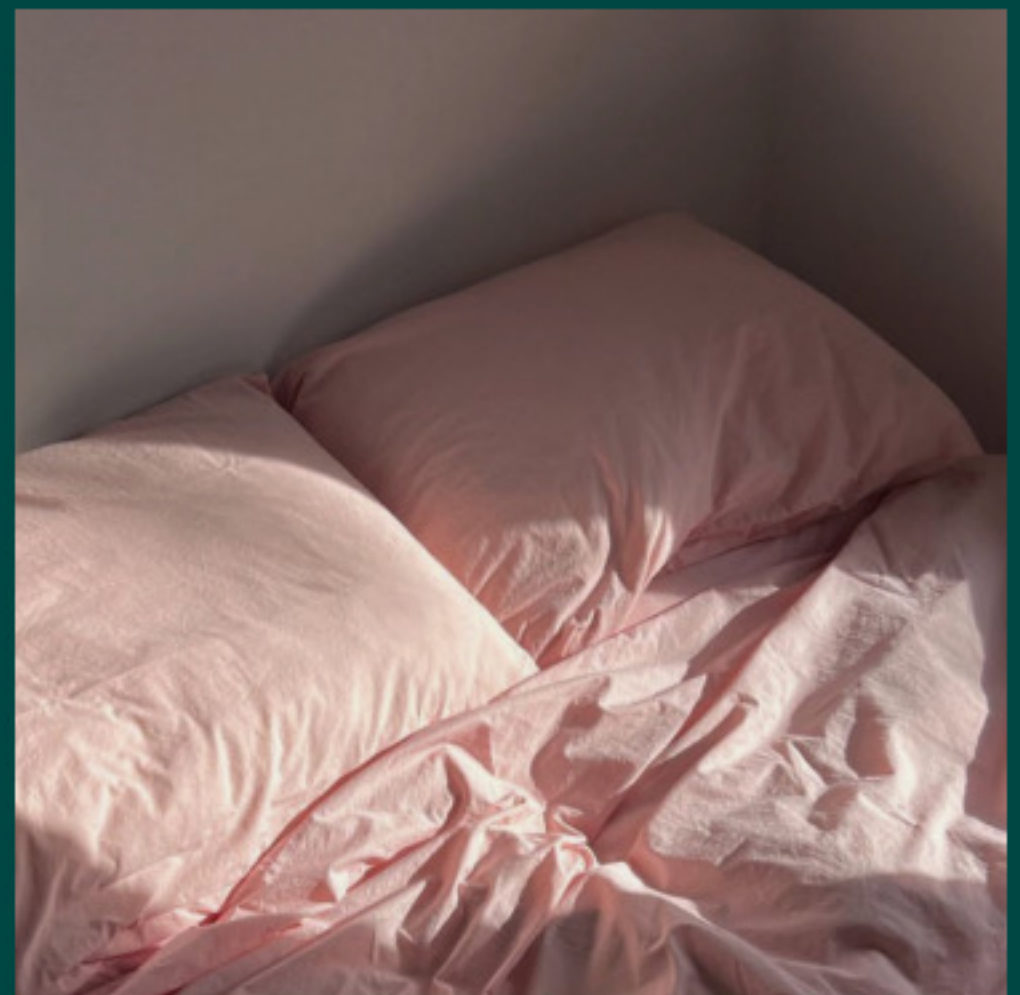
A woman's body responds to everything—from hormones to the pace of life

At different stages of life, hormonal changes can affect a woman's well-being. Stress, the environment, and an unbalanced diet can add to this burden.



Natural Changes Women May Notice at Different Life Stages*

Changes may include:

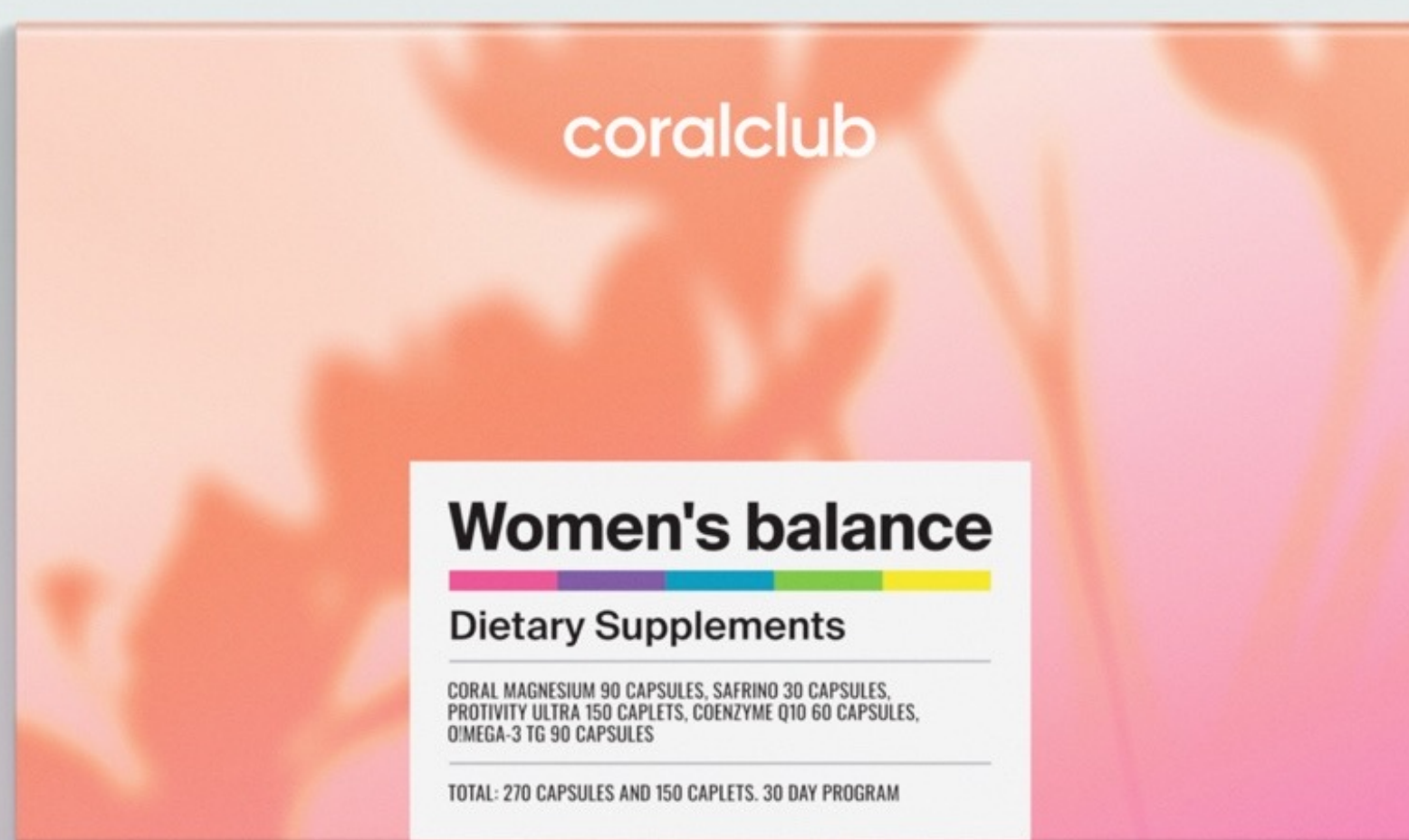


*These statements have not been evaluated by the Food and Drug Administration. This product is not intended to diagnose, treat, cure, or prevent any disease.

- Occasional trouble sleeping ^[1]
- Occasional fatigue ^[2]
- Periodic menstrual discomfort^[3]
- General heart health considerations^[4]

Harmony, beauty, and confidence

The Women's Balance program offers a comprehensive approach to supporting women's health. It is designed to support:*



Overall well-being through every stage of a woman's life



Maintaining emotional balance



Healthy energy levels



Restful sleep and vitality

*These statements have not been evaluated by the Food and Drug Administration. This product is not intended to diagnose, treat, cure, or prevent any disease.



The foundation of inner stability

The “Women’s Balance”
program includes:



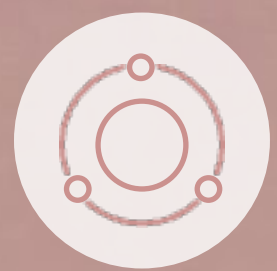
For mornings and evenings:

Protivity Ultra

Amino acid support for women's health:*



Helps support the body's natural defenses



Supports hormonal and metabolic balance



Provides nutrients for skin, hair, and nail health



*These statements have not been evaluated by the Food and Drug Administration. This product is not intended to diagnose, treat, cure, or prevent any disease.

For mornings:

Safrino

Formula for emotional comfort and balance:*



Helps support a calm, balanced mood



Helps support emotional stability



Helps support healthy sleep



*These statements have not been evaluated by the Food and Drug Administration. This product is not intended to diagnose, treat, cure, or prevent any disease.

Mornings and evenings:

O!Mega-3 TG

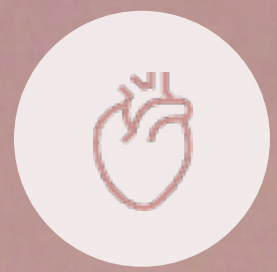
A bioavailable source of omega-3 fatty acids designed to support women's overall health:*



Supports normal hormonal balance



Supports comfort and well-being throughout the monthly cycle



Supports cardiovascular and nervous system function



Supports healthy skin, hair, and nails



*These statements have not been evaluated by the Food and Drug Administration. This product is not intended to diagnose, treat, cure, or prevent any disease.

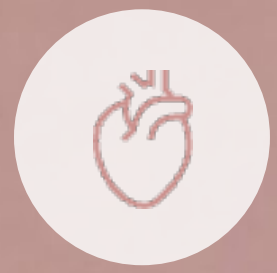
Mornings

Coenzyme Q10

An important nutrient for women that supports cellular energy metabolism, including:*



Supports normal cellular energy production and vitality



Supports heart and blood vessel function



Supports reproductive and nervous system health



Supports skin vitality and healthy-looking skin



*These statements have not been evaluated by the Food and Drug Administration. This product is not intended to diagnose, treat, cure, or prevent any disease.

Mornings and evenings

Coral Magnesium

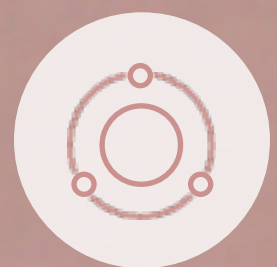
Supports relaxation and a sense of calm during times of stress, including:*



Restful sleep



Emotional balance during hormonal changes



Healthy muscle function



*These statements have not been evaluated by the Food and Drug Administration. This product is not intended to diagnose, treat, cure, or prevent any disease.

A synergy of ingredients for beauty and energy*



Omega-3 supports healthy cell membrane function, helping the body use nutrients effectively. Amino acids provide building blocks for skin and muscle health, and Coenzyme Q10 supports cellular energy production. Together, they help maintain healthy-looking skin, overall vitality, and beauty from within.

*These statements have not been evaluated by the Food and Drug Administration. This product is not intended to diagnose, treat, cure, or prevent any disease.

A synergy of ingredients for heart health*



Omega-3 helps support healthy blood vessels and nutrient utilization. Coenzyme Q10 supports cellular energy metabolism. Magnesium supports normal muscle and nervous system function. Together, these nutrients help support overall cardiovascular health.

*These statements have not been evaluated by the Food and Drug Administration. This product is not intended to diagnose, treat, cure, or prevent any disease.

Synergy of ingredients for emotional balance*



Safr'Inside™ saffron extract supports a balanced mood and helps promote a positive outlook, while chelated magnesium supports relaxation and a healthy stress response. Together, they help support emotional well-being and restful sleep.

*These statements have not been evaluated by the Food and Drug Administration. This product is not intended to diagnose, treat, cure, or prevent any disease.

“Women’s Balance,” a specialized program

Designed to support:*

- The body’s natural response to hormonal changes
- Emotional balance
- Overall well-being throughout all stages of a woman’s life

*These statements have not been evaluated by the Food and Drug Administration. This product is not intended to diagnose, treat, cure, or prevent any disease.



When Women's Balance

may be especially relevant:



18–25 years old

When women are adjusting to a new routine—school, work, and emotional stress

26–35 years old

When women are deeply focused on career and personal fulfillment and it's important not to lose sight of yourself

36–45 years old

When recovery, stability, and smart energy management become more important

46+ years old

During natural life transitions that call for extra attention to well-being



Literary sources



[1] Nowakowski S., Meers J., Heimbach E. Sleep and women's health //Sleep medicine research. - 2013. - Vol. 4. - No. 1. - P. 1.

[2] Autler A. S. et al. Sympathetic reactivity to emotional stress in women with major depressive disorder //Autonomic Neuroscience. - 2025. - T. 259. - P. 103257.

[3] Chu B. et al. Physiology, stress reaction //StatPearls [Internet]. - StatPearls Publishing, 2024.

[4] Ebong I. A. et al. The role of psychosocial stress on cardiovascular disease in women: JACC State-of-the-Art Review // Journal of the American College of Cardiology. - 2024. - T. 84. - No. 3. - pp. 298-314.